

2014
PRODUCT CATALOG



YOUR NEEDS

OUR GOAL

The KwikCut is designed and manufactured in the USA to meet the high standards of the professional market.

KwikCut Tools — Professional Quality



Spring Action and Original KwikCut™

These multi-purpose cutters are designed to make quick work of Polyethylene pipe, thin wall PVC, hose, tubing and most other non-metal items. Our blades are manufactured at the Dawn Industries plant using a proprietary blade making system from the longest lasting, highest quality metal. This ensures exceptional quality control throughout the production process and creates a blade that is sharper and holds its edge longer for more clean, precise cuts. Together with the tough fiberglass reinforced nylon handles KwikCut is the highest quality cutter on the market at any price.

100 and 135 series models are available with orange or black handles as well as stainless steel or PTFE coated blades. SS200 and SL200 are only available with black handles and stainless blades.

Sizes of Cut:

- 100 Series: Cuts 1/8" – 1 1/4" OD
- 135 Series: Cuts 1/8" – 1 5/8" OD
- 200 Series: Cuts 1/8" – 1 7/8" OD

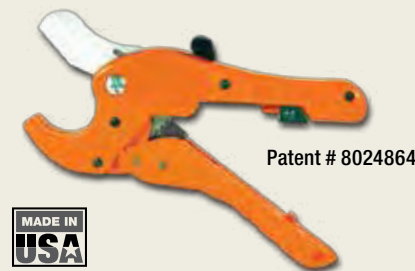
See price list for specific products numbers



KwikCut™ Combo Pak

The KwikCut Combo Pak combines the precision and durability of the Original KwikCut multi-purpose cutter with a handcrafted leather carrying pouch. An extra stainless steel blade is also included.

Part Number: SL135-0-SS Combo
T135-0-SS Combo



KwikCut™ Ratchet Cutter

Our patented Double Action Ratchet gives you plenty of extra power. Our precision milled blade provides a clean cut with very little effort. Efficient one-hand operation with dual push button safety release and locking mechanism. Ideal for heavy walled plastic pipe and plastic conduit.

Cuts 1/8" – 1 5/8" OD

Part Number: R125



Ergonomic Wire Strippers

- Double dipped handles with air cushion pockets provide a comfortable grip, reducing hand fatigue
- Strips 10-20 gauge wire
- Built-in bolt cutters cleanly cut 6-32 and 8-32 bolts

Part Number: WS1022-ERG0



Wire Stripper/Cutter

- Narrow nose fits into tight places
- Spring-loaded action for self-opening
- Shear-type cutting blades for square, clean cuts
- Hardened steel with precision ground paired stripping holes for 10 to 22 gauge wire
- Wire looping and bending holes

Part Number: WS1022



Hack Saw

KwikCut brings you the finest high performance hack saw you can find. High tension design helps blades last longer and is more comfortable to use than other frames. It also offers more versatility and can make either standard or flush cuts. Convenient blade storage in top Frame bar.

Part Number: HS12



Rope Saw

- Cuts plastic, wood, rubber and more
- Cuts in places you can't get to with a larger saw and cuts in any direction
- Ergonomic grips allow you to use your hands instead of just your fingers

Part Number: RS32



Hand Saw

For cutting large PVC or ABS pipe, with optimum tooth design. No other saw cuts faster or straighter than KwikCut PVC Saw. Available in 9", 13" and 18" lengths.

Part Number: GS09F
GS13F
GS18F



Mini Hack Saw

- Ergonomic handle made with tough resin
- Quick change blade

Part Number: MH004





In repeated high pressure testing (up to 400 psi) the KwikConnect never leaked or failed. In every test, the pipe burst without one KwikConnect failure. KwikConnects are designed for use wherever standard, ASTM D 2609, insert fittings are used.*

*Designed for use on 80, 100 and 160 psi pipe which meets ASTM D 2239 pressure rated polyethylene pipe standard as well as Ag drip pipe.



KwikConnect™ Coupler 1"

Part Number: KCC1429-010

KwikConnect Features Include

- Installs in seconds
- No clamps needed
- Fast, easy and secure
- Reduces labor
- Saves dollars
- Dependable and reliable



Expanding lock ring provides superior holding power by biting into the pipe and expanding to grip securely in high pressure or hammer situations.

PTFE coated Buna O-rings for ease of installation, and long sealing life.

KwikConnect is made from the finest engineered resins available on the market today.

Patent Number 8328241



KwikConnect™ Combo Tee

Part Number: KCRT1402-130
KCRT1402-131



KwikConnect™ Combo Elbow

Part Number: KCRE1407-130
KCRE1407-131



KwikConnect™ Male Adapter 1" x 1" MPT

Part Number: KCMA1436-010



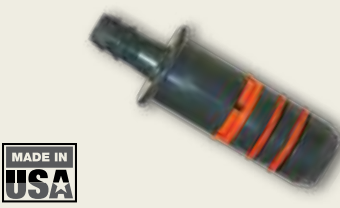
KwikConnect™ Tee 1"

Part Number: KCT1401-010



KwikConnect™ Elbow 1"

Part Number: KCE1406-010



KwikConnect™ End of Line 1"

Part Number: KCEL1429-129



- No tools required
- No snaps or straps
- Significantly less flow restriction than inserts
- Installs 6 x faster than inserts with worm screw clamps
- Superior versatility (remove, move, replace)

See price list for specific part numbers



Pre-Installed Swing Connections

Independent Lab Test Results

Flow Rate	13.6 gpm @ 40psi
Flow Restriction	41% less than standard insert tee
Quick Burst Test	392 psi @ 62 seconds — The KwikTap fitting did not fail



Patent # 7150289



A superior saddle tee for Polyethylene that eliminates the hassles and problems associated with insert fittings.

- No rubber gaskets
- Lower profile saddle tee
- T-Bolt and Nut made of fiberglass reinforced nylon
- No clamps to rust or corrode
- Molded barb seal

See price list for specific part numbers

Zero Flow Restriction
Withstands Over 400 PSI Without Leaking

2 1/2" length protects seal area if pipe is kinked or damaged near saddle tee.



Patent # 478189



Part Number:
HCT-COMBO Hole Coring Tool
ND375 Nut Driver

KwikPull™
Professional Quality

Our Pipe Pullers start working in seconds. Slip the pipe into the puller and you're ready to go. **It's that simple.**

This patented method seals the pipe as it bends and enters the ground, eliminating the need for tape.

Save on labor, fuel and machine time.

1" Heavy Duty Dual Pipe Puller



Part Number: DPP01

Patent # 7654774



Watch the Video



Snap this icon on your Smartphone to watch the video

1 1/4" and 1 1/2" Heavy Duty Pipe Puller



Part Number: DPP15

KwikLink



Part Number: KL111

2" Heavy Duty Pipe Puller



Part Number: DPP02

KwikTools™
Professional Quality



Crimpers

- Forged from high quality tool steel for heavy usage
- Perfect for installing or removing pinch clamps as well as cutting wire strapping, pulling nails and more

Part Number:
CT108 Length 8" | CT112 Length 12"



Groove Joint Pliers

- Jaws have zinc phosphate finish for rust protection
- Parallel jaws grip in all positions

Part Number:
GJP100 Length 10" | GJP120 Length 12"
GJP160 Length 16"



Dead Blow Hammer

- Tough, non-marring striking face
- Weighs 1 1/2 pounds
- No bounce

Part Number: DBH15



KwikSplice Direct Bury

- Kit includes gel, tube and UL listed wire connector
- Environmentally friendly non-drying GreenPro sealant
- UV rated

Part Number: DBS-1412-L | DBS-812-T



KwikSplice Wire Connectors

- Ribbed Cap provides positive-grip for fast easy installation
- Narrow Design allows more room in tight boxes
- Fixed Square Spring provides more secure gripping on conductors
- Deep, Wide-Throated Skirt protects against flash-over and turned-back strands

See Price List for specific part numbers



KwikSplice Wings Wire Connectors

- Unique Contoured Wings act as a built-in wrench providing maximum torque
- Deep, Wide-Throated Skirt protects against flash-over and turned-back strands
- Fixed Square-Wire Spring threads create a secure pressure grip

See Price List for specific part numbers



Nipple Extractor

- Quickly removes both 3/4" and 1/2" PVC or Polyethylene risers and nipples
- Extra sharp , long lasting gripping blades

Part Number: NE005



Four Way Key

- Fits stopcocks, sillcocks and valves
- Heat-treated steel

Sizes:
1/4", 9/32", 5/16", 11/32" internal square

Part Number: KEY04



KwikTorch

- Fast Light, Trigger Ignition
- Interchangeable Tips
- Turbine Anti Blow-Out Flame
- Uses Propane or MAPP Gas

Part Number:
DT1000 Torch | WT100 Optional Warming Tip
PT100 Replacement Tip



Utility Knife – Folding

- Durable construction
- Accepts most standard blades
- Convenient pocket clip
- Retractable blade securely folds into handle

Part Number: UK200



Utility Knife

- Double-edged blades conveniently store in lightweight aluminum handle
- Accepts most standard blades



Part Number: UK100



Snap Off Utility Knife

- Great for light-duty cutting and trimming
- Always have a fresh sharp blade
- Eight snap-off segments per blade

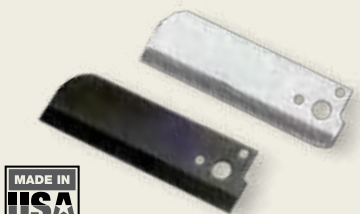
Part Number: S0123



Turf Knife “The Claw”

- Cutlery grade steel blade
- Comfortable non-slip grip
- Fixed hook serrated blade knife for quick clean cutting of sod or turf grass, roofing material, and floor coverings

Part Number: TK300



Replacement Blades

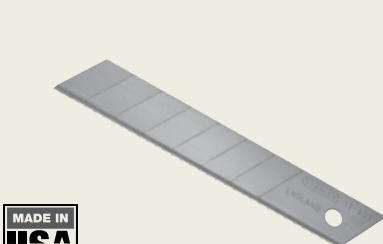
KwikCut (Original and Advance)

Part Number: BT100 | BT135 | SSB200
BT100-SS | BT135-SS



Hack Saw

Part Number: HSB18 | HSB24 | HSB32



Snap-off Utility Knife

Part Number: BS0123 | 10 Pack



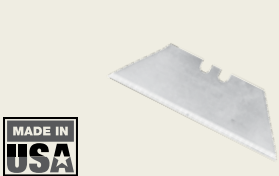
Ratchet Cutter

Part Number: BR125



Hand Saw

Part Number: BGS09F | BGS13F | BGS18F



Utility Knife

Part Number: BUK100 | 5 Pack

One-Piece PVC In-Line Repair and Fitting Replacement.
The Only Permanent Solvent Weld Repair.



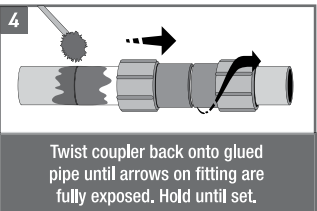
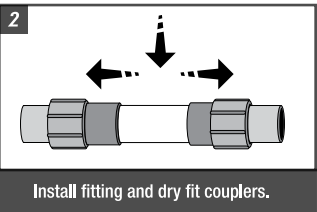
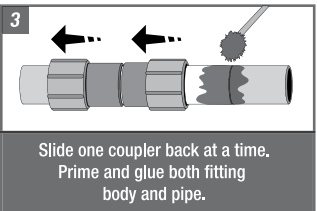
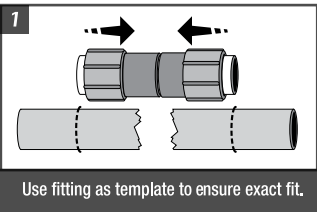
KwikRepair™ makes installation or repair of PVC lines faster, easier, stronger and more cost efficient with just one fitting. Our sleeves slide onto the pipe, eliminating bending or flexing of the pipe for in-line repair or replacement.

- Do the job with just one fitting
- Permanent solvent weld seal
- Effective for limited space applications
- No Thrust Blocking or Staking needed

See price list for specific part numbers and sizes



Patent # 6318761



KwikRepair Working Pressure Ratings @ 73° F

Diameter	Pressure	Diameter	Pressure
3/4"	360psi	2"	210psi
1"	338psi	2 1/2"	225psi
1 1/4"	278psi	3"	135psi
1 1/2"	248psi	4"	165psi



KwikSlip “Y”

One-piece glue fitting for PVC to Swing pipe

- Faster to install
- No threads to leak
- Save on labor cost
- Reduce inventory
- Barb and Spike design

Part Number: SY007 | SY010



KwikSlip Tee

Part Number:
ST005
ST007
ST010



KwikSlip Spigot x Hub

Part Number:
SC101
SC131
SC168



KwikSnap

KwikSnap is a glue-on PVC “Y” Saddle for use with 3/4” and 1” PVC to Swing.

- Do the job with just one fitting
- Fitting outlet molded at 30° angle to prevent kinking of the Swing pipe

Part Number:
KSY007
KSY010

KwikAdapt SwingMax

The KwikAdapt line of products offers fast, secure connections from Polyethylene pipe to Swing pipe in a one-piece design. The barb and spike combination keeps the Swing pipe in place even under pressure surges.

- Faster to install
- Save on labor cost
- Strong and convenient
- Barb and Spike design



Swing Tee x 1/2" MPT

Part Number: SW1403-003



Swing Elbow

Part Number: SW1413-073 | SW1413-099



Swing Coupling

Part Number: SW1429-003



Swing Tee

Part Number: SW1401-003



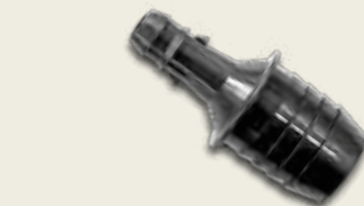
Swing Straight

Part Number: SW1436-073 | SW1436-099



Swing Insert Tee

Part Number: SW1401-099 | SW1401-129



End of Run

Part Number: SW1429-099 | SW1429-129



KwikBucket Storage Organizers

- High-impact plastic bucket with heavy duty handle
- Comes with three large sorting trays
- Comes with a very rugged and durable water resistant lid

Part Number: B0111 | B0T01



KwikCap – Orange

- Ideal marker and cover for drain valves, stop and waste valves

Part Number: ICAP-2 | ILID-2

KwikCap Lighting – Brown

- Ideal moisture resistant marker and cover for landscape lighting splices

Part Number: ICAP-2DRY | ILID-2DRY



KwikTote “Industrial Strength”

- Made of High Density Polyethylene
- Resistant to Acids, Harsh Chemicals and Oils
- Lightweight, Tough and Durable
- Great truck organizers

Part Number: PT005



KwikGlue Tote

- Can be used for quart/pint cans
- Carries glue and primer together (cans not included)
- Eliminates spills, waste and loose cans

Part Number: GT200



KwikBucket Apron

- Features 22 pockets
- Increases storage capacity
- Fits all 3.5 and 5 gallon buckets
- Secures permanently with attachment accessories

Part Number: BA20



KwikCut Tool Pouch

Dawn's leather tool pouches are great for holding KwikCut Pipe cutters, wire strippers or any other tools that fit. Made of high quality leather.

Part Number: CP10





5055 W. 58th Ave.
Arvada, Colorado 80002

1.303.296.4041 Phone
1.800.321.7246 Toll-Free
1.303.295.6604 Fax

dawnindustries.com

